

LOCAL PRESIDENTS ORIENTATION

OPSEU Local and Provincial Structure



This orientation module should take no more than 15 minutes

Download the Local Presidents Toolkit and full Local Presidents Orientation series at <https://opseu.org/member-education/>



Navigating OPSEU

Local and Provincial Structure

An orientation for Local Presidents
Created by the OPSEU Member Education Unit



Local Structure: Types of Locals

Single-unit Local, where all members work at a single location for a single employer

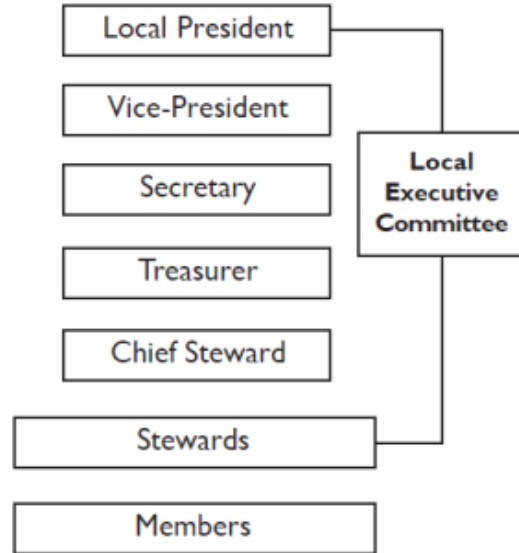
Multi-unit Local, where all members work for a single employer but at different locations

Composite Local, where members work for more than one employer at one or more work locations

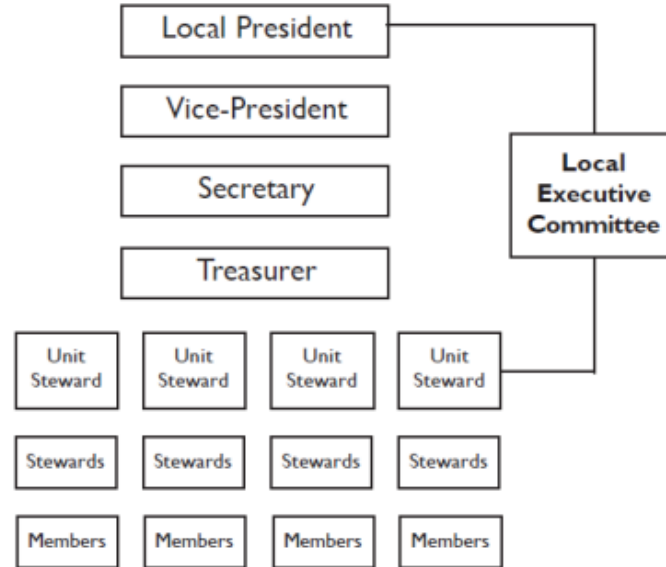


Local Structure: Single Unit, Multi Unit/Composite

Single-unit local



Multi-unit or Composite local



Local Structure: Committees

Depending on your local you can have a number of employer/employee or union committees.

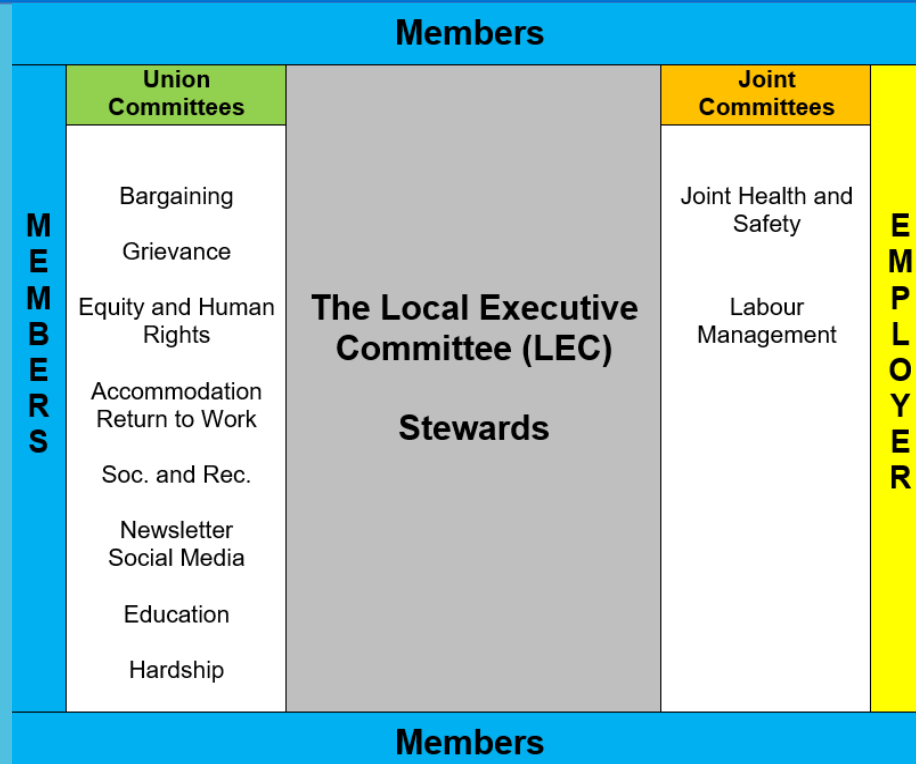
Joint employer/employee committees

- **Health and Safety**
- **Labour Management**

Details on these committees can be found in the Local Presidents Toolkit on page 50 and 72



Local Structure: Committees



Provincial Structure: Regions

- OPSEU is structured in a number of ways including geographically by region.
- Each local is assigned a number. The first number represents the local's region
- Regions are represented by Executive Board Members, Hardship Committee reps, and Equity Committee Reps.

i.e. Local 123 is in Region 1



Provincial Structure: Regions



LOCAL PRESIDENTS ORIENTATION

OPSEU Structure: Provincial

Locals: the heart of OPSEU structure

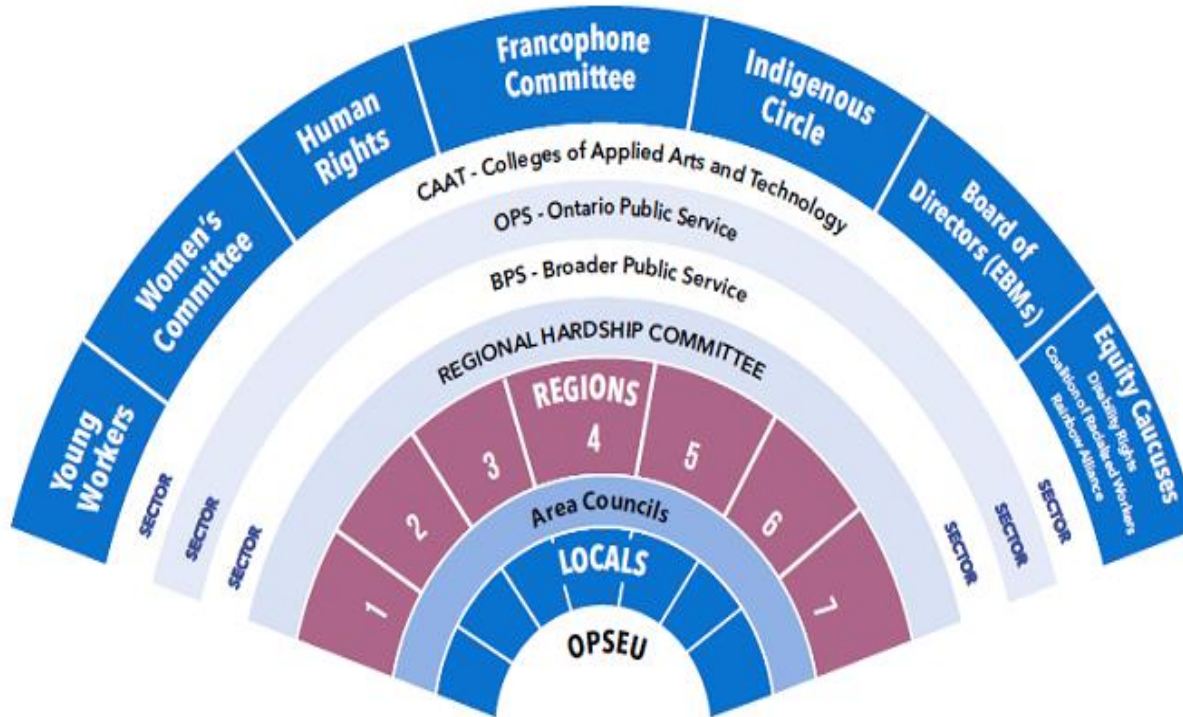
Area Council: different OPSEU locals in a city or region

Sectors: workplace groupings that coordinate strategies: for example: Broader Public Service (BPS), Ontario Public Service (OPS) and Colleges of Applied Arts and Technology (CAAT)

Provincial Reps: Committees, Caucuses, and the Board of Directors



OPSEU Structure



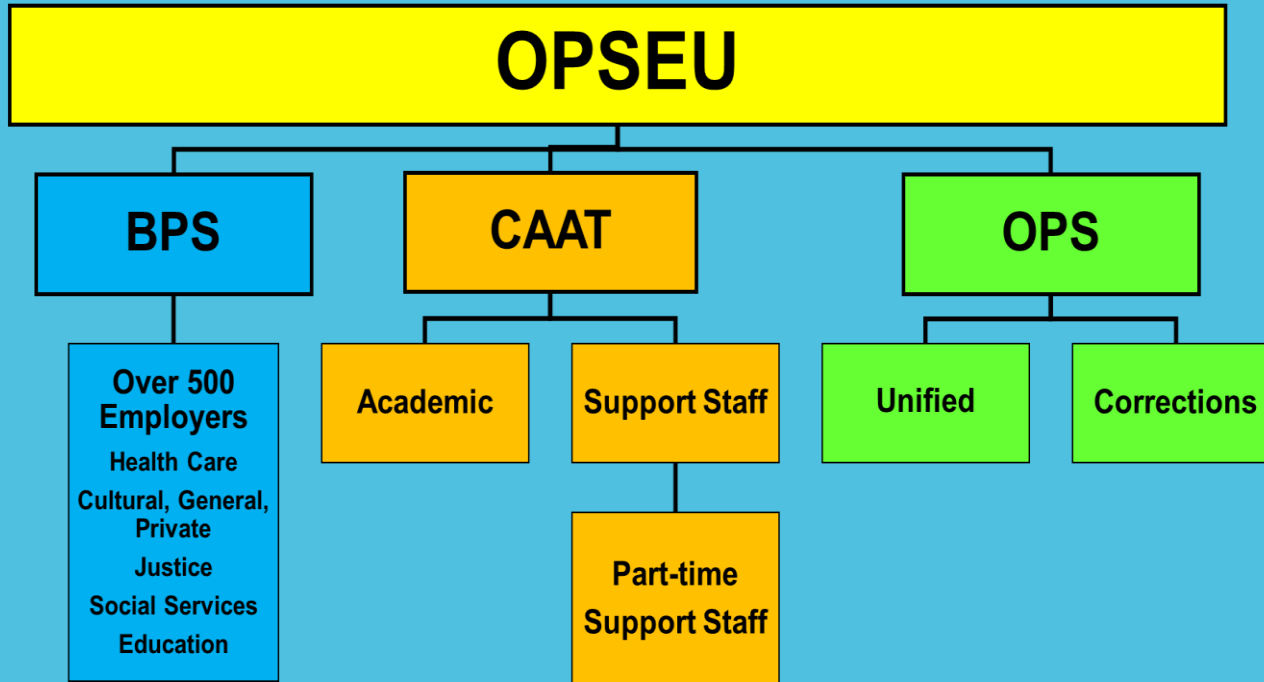
LOCAL PRESIDENTS ORIENTATION

Linking Locals by Workplace Commonality

Sectors are Provincial bodies sorted by workplace/employers

- Broader Public Service
- Ontario Public Service
- Colleges of Applied Arts and Technology





BPS Sectors

1. Ambulance	10. Hospital Professionals
2. Developmental Services	11. Hospital Support
3. Boards of Education and Cultural Institutions	13. Municipalities
4. Children's Aid Societies	15. Children's Treatment Centres
5. Community Agencies	16. Property Assessment
7. BPS Corrections	17. Community Health Care Professionals
8. Long-Term Care	18. Mental Health
9. Universities	19. CBS and Diagnostics
	26. Liquor Board Employees

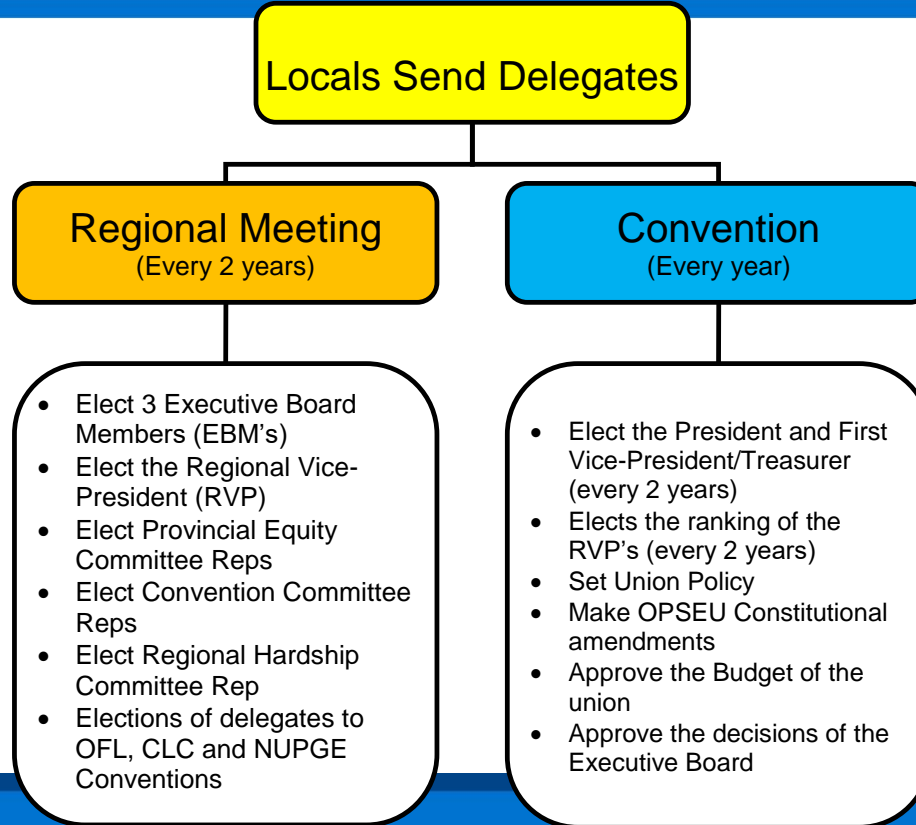


OPSEU Structure: Decision Making

- OPSEU is a member driven organization
- Members vote for their local leaders and delegates to Regional Meetings and Convention
- Convention is the highest decision making body in OPSEU



OPSEU Structure: Decision Making



LOCAL PRESIDENTS ORIENTATION

Convention Delegates:

- Decide union policy
- Amend the Constitution
- Appoint auditors
- Review and pass the budget
- Set union dues
- Approve decisions of the Executive Board

Every Two Years

- Elect the President
- Elect the 1st Vice-President Treasurer



Where does the Local fit in?

Answer the following questions for your Local	Yes / No
Do I have stewards in all work areas?	
Do I get reports from the Health and Safety Committee?	
Is there a Local Area Council? Is the Local a member of Area Council?	
Do I know who my regional equity committee reps are?	
Do I have contact information for my provincial sector leadership?	
Do I have contact information for my Executive Board Members?	



Next Steps

- Knowing OPSEU structure will help with finding resources and supports for your Local.
- OPSEU's Member Education Unit offers a three day training course for local presidents.
- We urge you to apply the next time it is offered.
- Check the OPSEU website or call your OPSEU regional office to find out when the next course is being offered.





MEMBER EDUCATION FORMATION DES MEMBRES



opseu.org/education sefpo.org/formation