

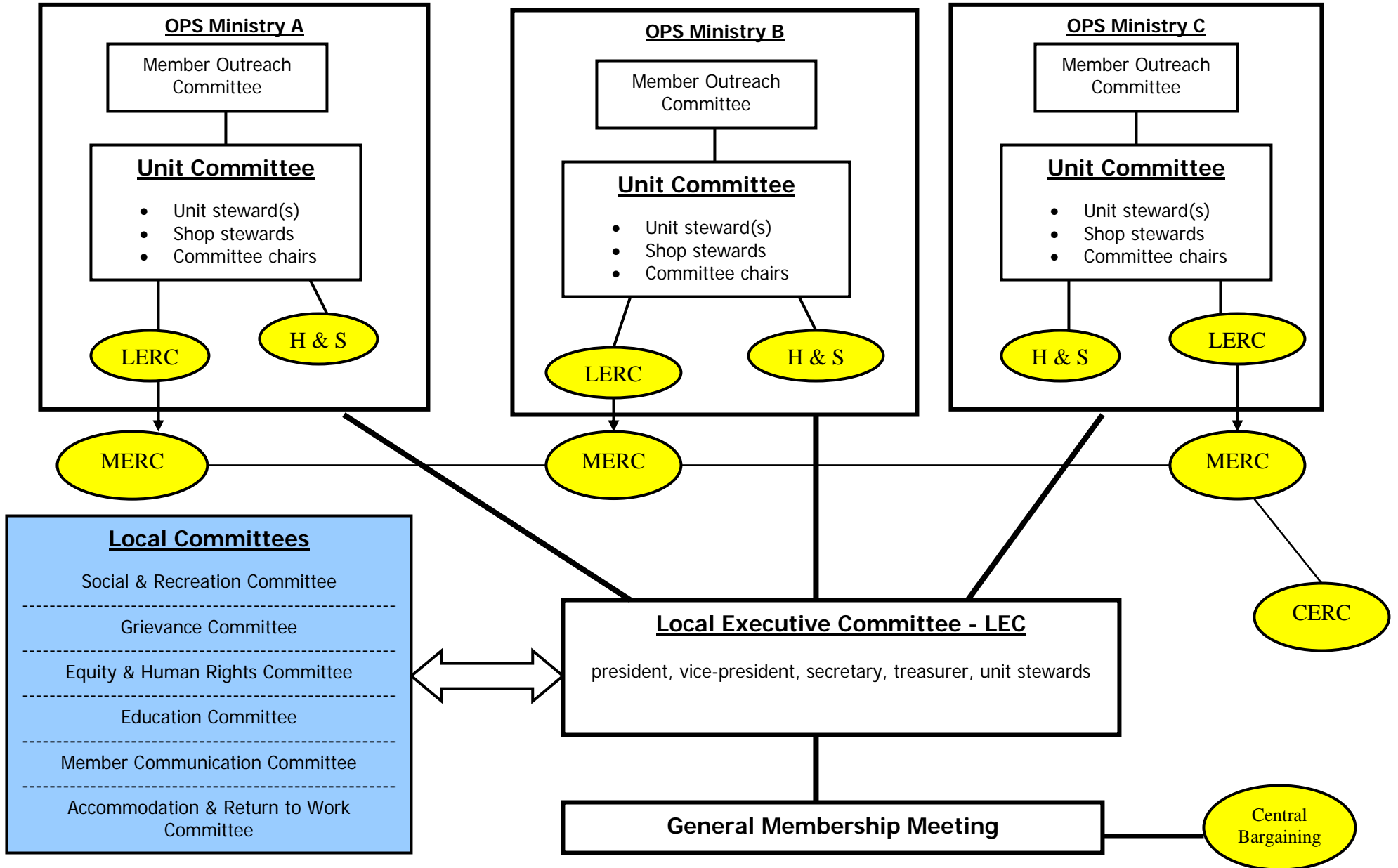


Composite and Multi-Unit Local Structure Examples

For Use In

DEVELOPING THE UNIT - Building Capacity in Composite and Multi-unit Locals

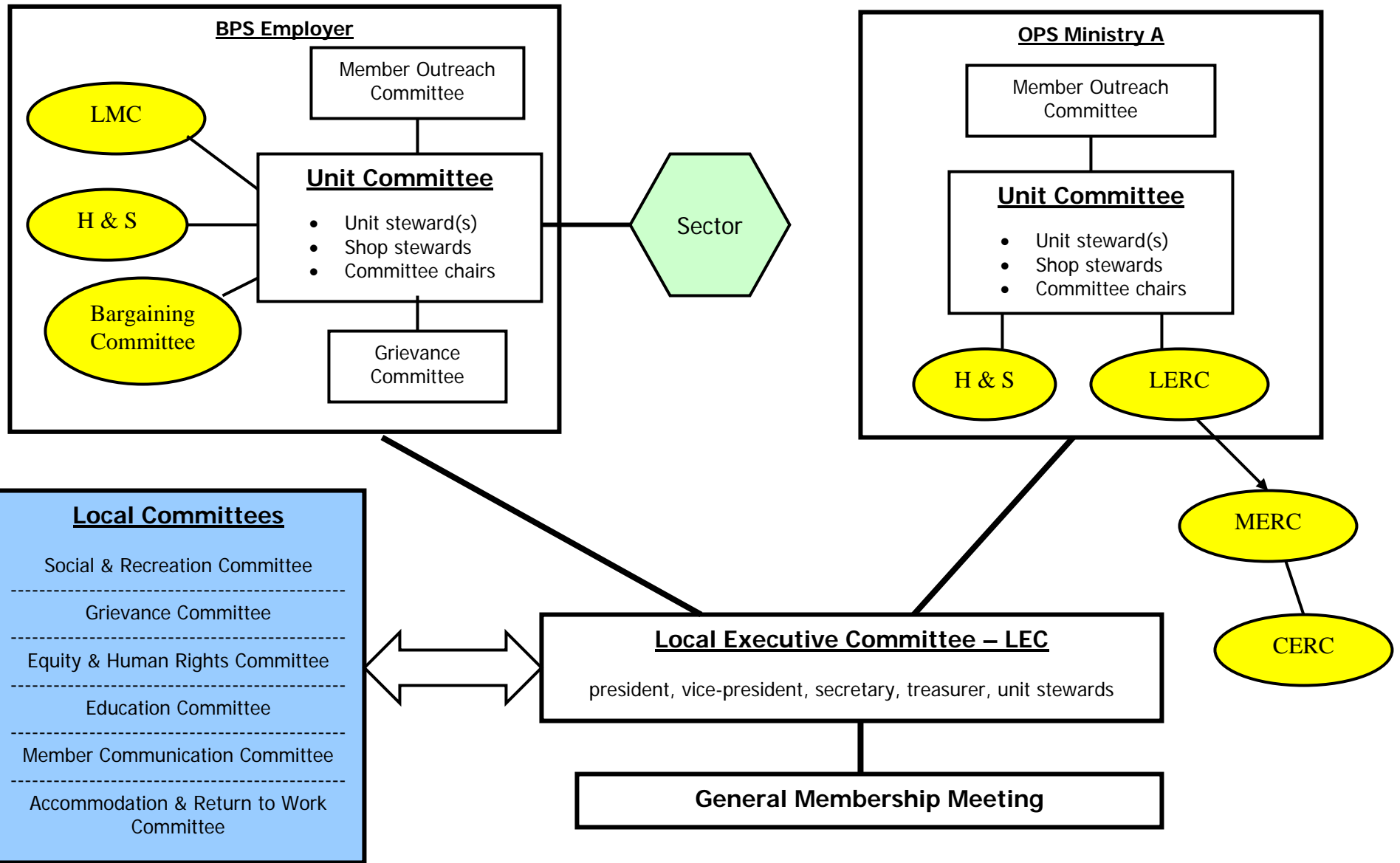
OPS Composite Local Structure - Example



Union - employer
Committees

OPS – Ontario Public Service, **LERC** – Local Employee Relations Committee, **H&S** – Health and Safety, **MERC** – Ministry Enforcement and Renewal Committee, **CERC** – Central Enforcement and Renewal Committee

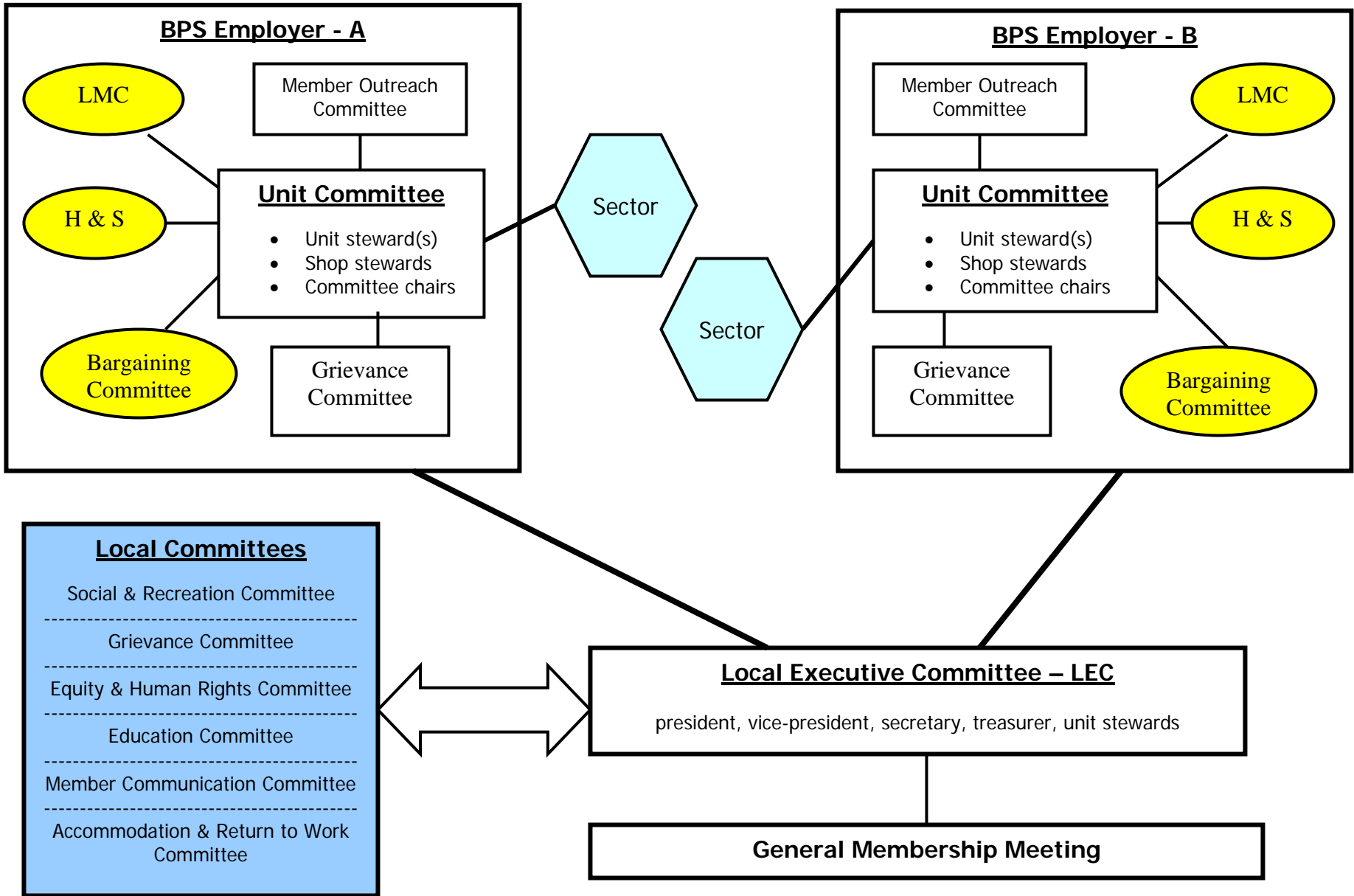
OPS/BPS Composite Local Structure - Example



Union – employer
Committees

OPS – Ontario Public Service, **BPS** – Broader Public Service, **LMC** – Labour Management Committee
LERC – Local Employee Relations Committee, **MERC** – Ministry Enforcement and Renewal Committee,
CERC – Central Enforcement and Renewal Committee,

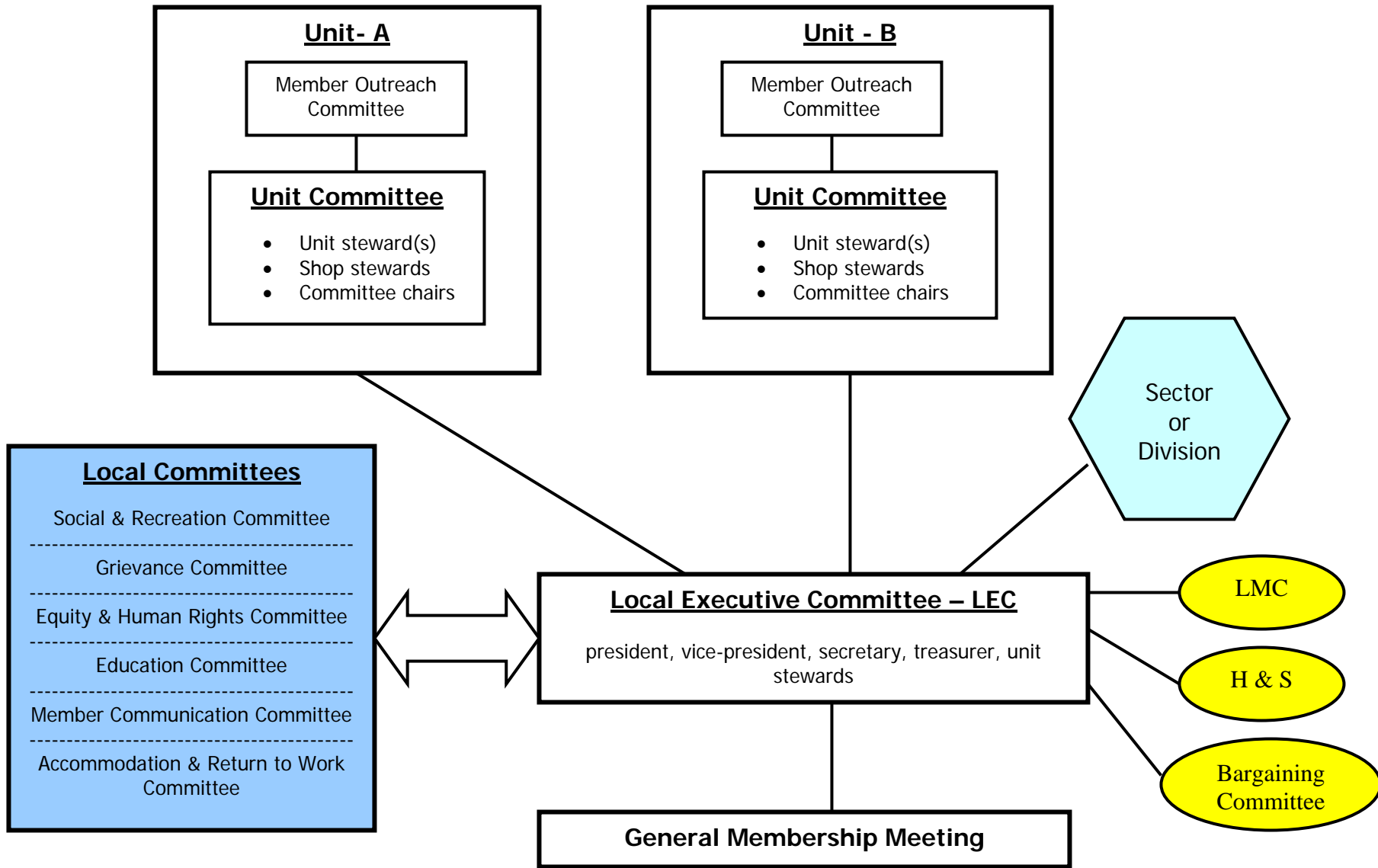
BPS Composite Local Structure - Example



Union – employer
Committees

BPS – Broader Public Service, **LMC** – Labour Management Committee, **H & S** – Health and Safety

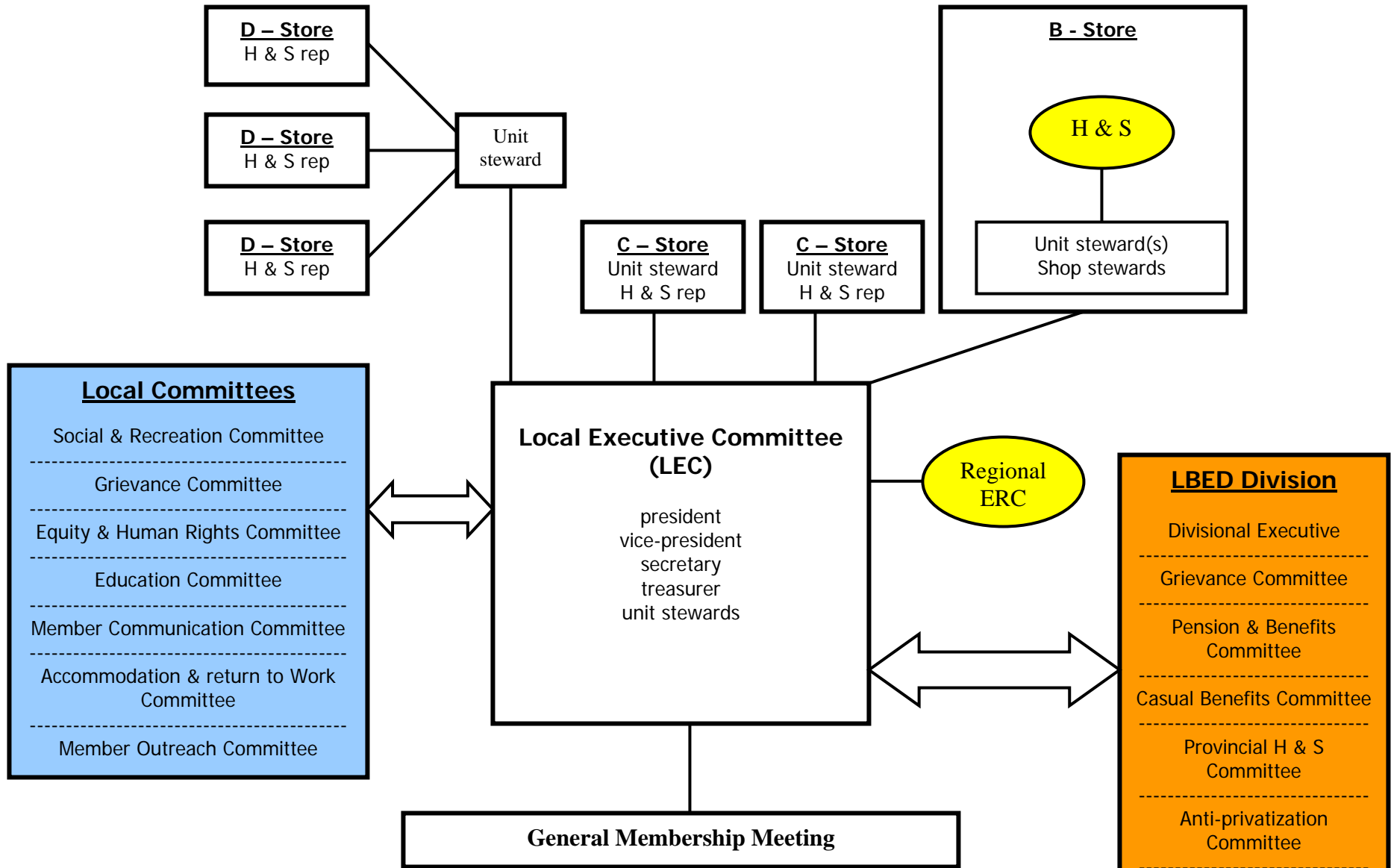
Multi-Unit – Generic Example



Union – employer
Committees

OPS – Ontario Public Service, **BPS** – Broader Public Service, **LMC** – Labour Management Committee, **H & S** – Health and Safety

Multi-Unit Local Structure – LBED Example



Union – employer committees

LBED – Liquor Board Employees Division, **ERC** – Employment Relations Committee
H & S – Health and Safety